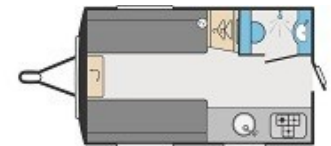
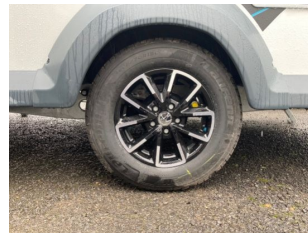




Stockbridge Road (A30)  
Lopcombe, Salisbury  
Wiltshire SP5 1BS  
Tel: 01980 863636  
sales@tilshead-caravans.com

## Swift Basecamp 2, 2 Berth, 2024

# £24,495



### Description

Featuring two berths with a spacious seating area and corner washroom this 2024 Swift Basecamp 2 crossover caravan is well equipped yet lightweight.

Exciting, sporty, fun and stylish, the Basecamp 2 is compact and lighter in weight than traditional caravans. Easy to tow by most family cars and is easy to manoeuvre once on site.

### Bed Sizes

|                       |               |
|-----------------------|---------------|
| Front Offside Single  | 6' 0" x 2' 3" |
| Front Nearside Single | 6' 0" x 2' 3" |
| Front Double          | 6' 6" x 6' 0" |

### Dimensions

|                 |                |
|-----------------|----------------|
| Internal Length | 3.42m / 11' 3" |
| Overall Length  | 5.10m / 16' 9" |
| Overall Width   | 2.28m / 7' 6"  |
| Overall Height  | 2.60m / 8' 6"  |

### Technical Specifications

M.R.O. - 932kg    M.T.P.L.M. - 1043kg    No of Berths - 2    Model Year - 2024    Awning Size - Please Ask

### Features Include

• Key features of the 2024 Swift Basecamp 2 include:

- SMART construction with GRP body panels
- Swift Command control panel with 7" touch screen
- Wide panoramic front opening window plus multi-directional rooflights in kitchen and washroom
- FENIX NTM® kitchen worktops (resistant to scratches, hygienic and easy to clean) and underslung stainless steel sink and removable chopping board
- Dometic (Series 10) 83 litre undercounter fridge with electric ignition and removable freezer compartment with digital controls
- Thetford toilet with electric flush and 18 litre wheeled waste tank
- Dual fuel space saving under-floor Whale heater with blown air central heating
- Whale dual fuel rapid water heater
- Duplex Thetford thermostatic oven and grill with three-burner gas hob, all with electronic ignition
- Minimum of four 230V sockets, three mounted into the sink pop up docking station
- Low energy LED lighting throughout interior including LED adjustable spotlights with USB points
- Cassette pleated flyscreens and blinds to all windows
- Large front seating area converting to a large double or two single beds
- Roof mounted 100W Solar panel
- TV aerial plus TV point with 230V, 12V and aerial sockets

External 230v mains point and external BBQ point, plus external cold water shower point  
Habitation door flyscreen  
Ecocamel Orbit shower head with on/off button for a powerful shower that uses less water

For more details of this model, including full specifications, please download a brochure on our [Downloads](#) page or contact us.

**Should you be considering a purchase of this caravan model then please do speak to us on Tel. 01980 863636 and we would be happy to quote you, advise on availability and talk about your exact requirements. •**